

PART OF THE S.W. 1/4, OF SEC. 28, T.7N., R.1W., S.L.B. & M.

NORTH OGDEN
BLOCK 27, PLAT A

IN NORTH OGDEN CITY

SCALE 1" = 50'

TAXING UNIT: 10

SEE PAGE 29

401.0'

2750 NORTH STREET

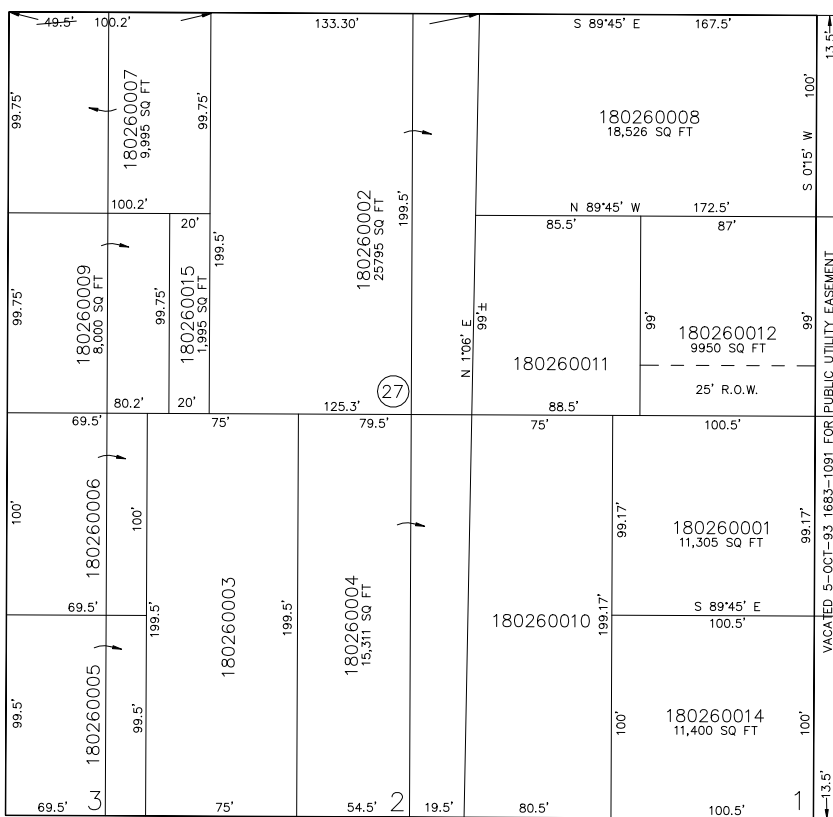
S 89°45' E

650 EAST STREET

399'

N 0'15" E

SEE PAGE 25



700 EAST STREET

300'

SEE PAGE 27

VACATED 5-OCT-93 1683-1091 FOR	33
PUBLIC UTILITY EASEMENT	

2700 NORTH STREET

S 89°45' E

401'

SEE PAGE 15